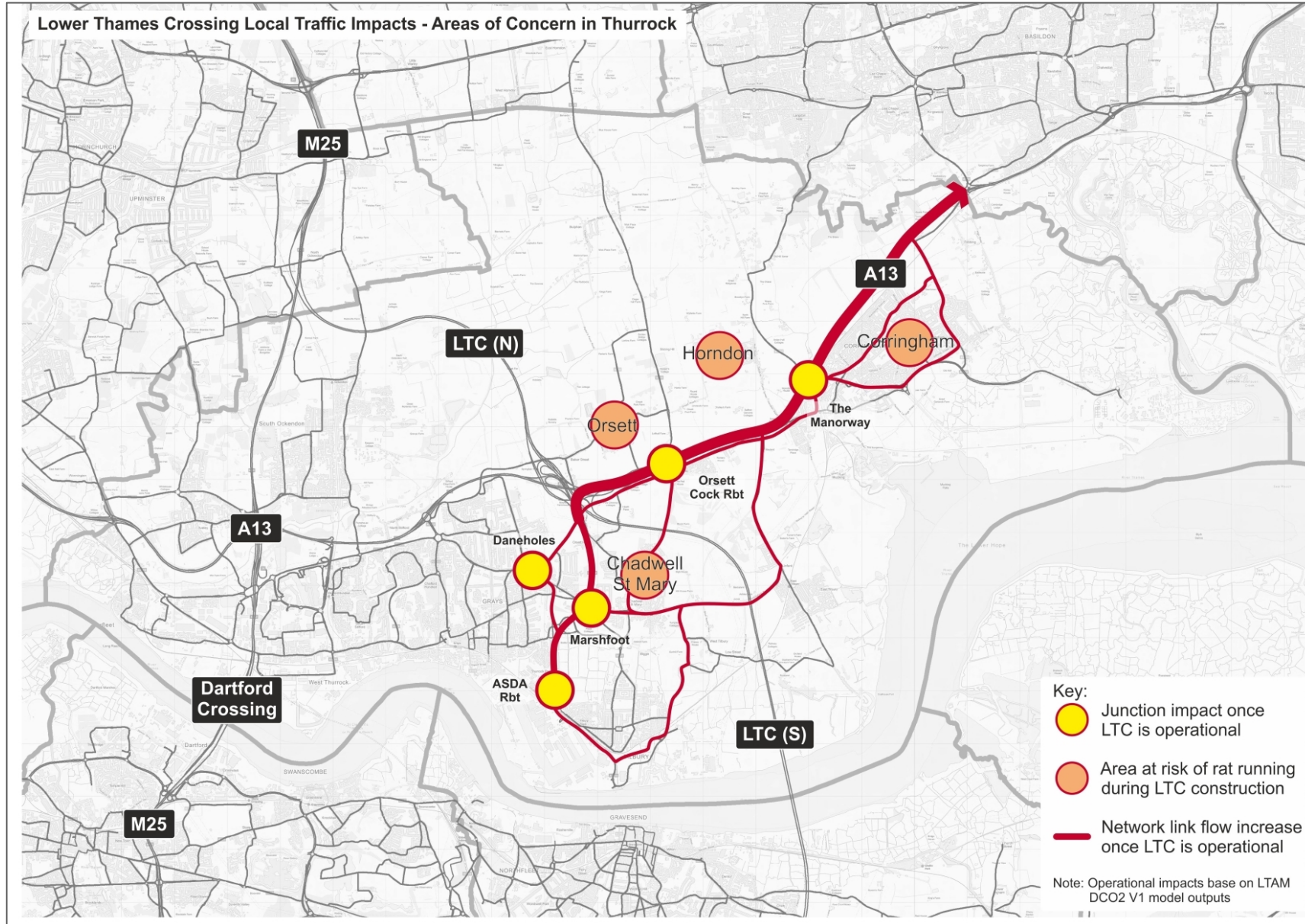




Lower Thames Crossing Orsett Cock/A13 Junction

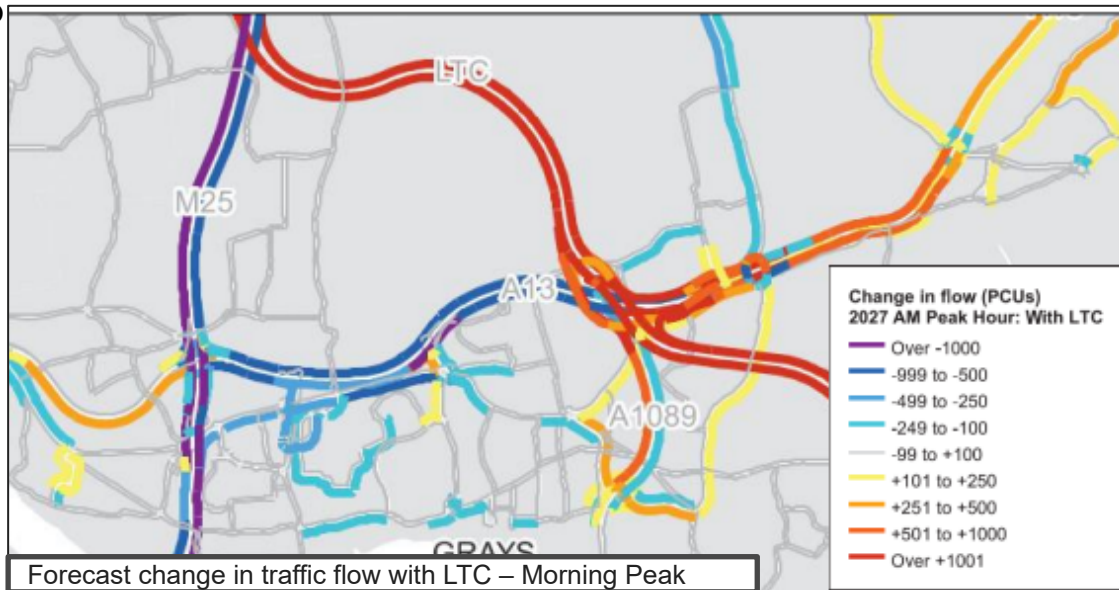
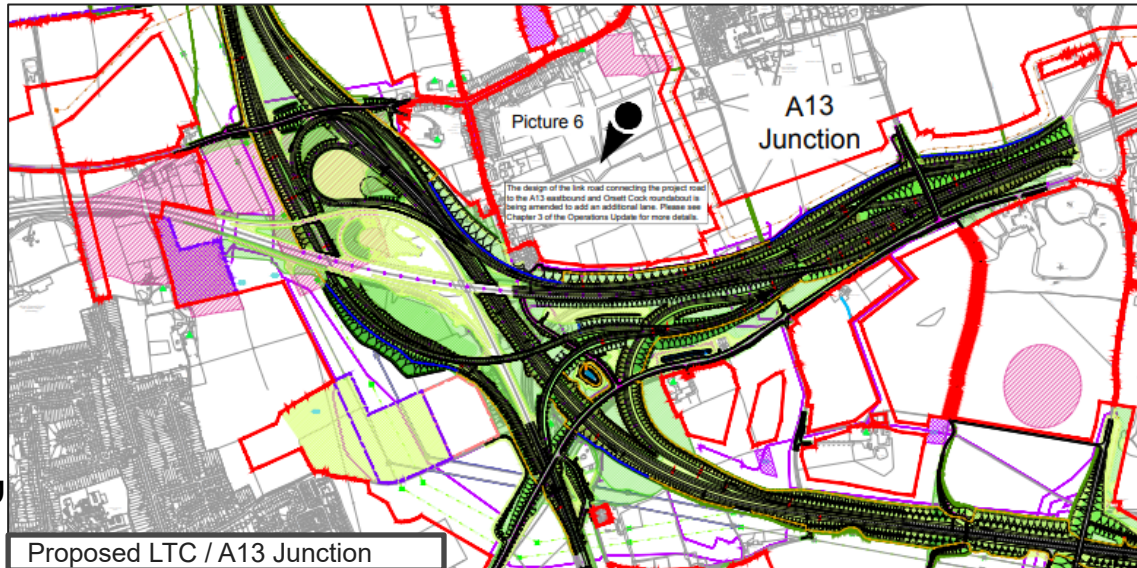


LTC Traffic Impacts - Overview





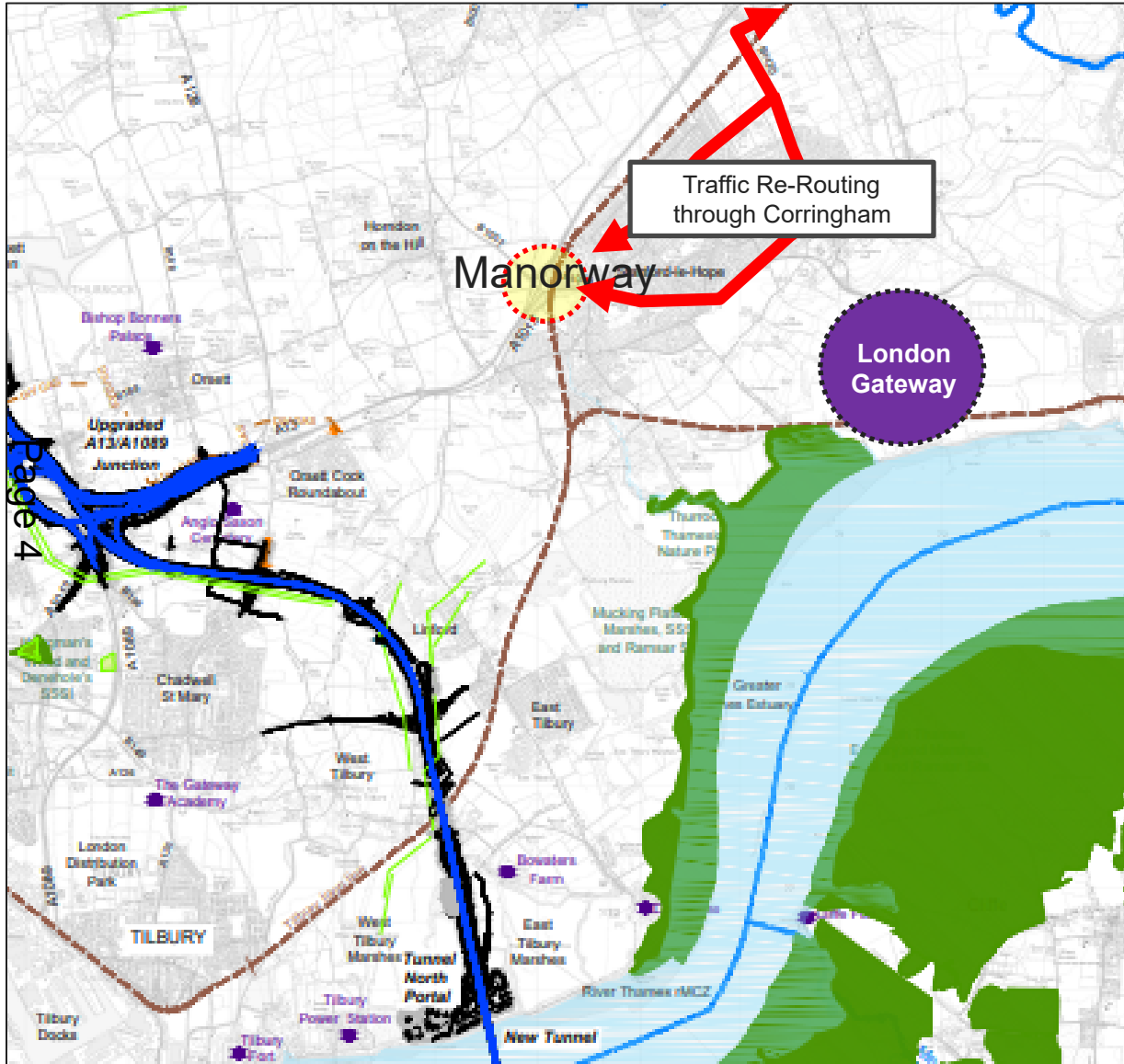
Orsett Cock / A13 Junction



- A13 / Orsett Cock will form part of the wider LTC / A13 / A1089 Interchange
- LTC results in significant traffic flow increases on the A13 east of LTC
- With LTC total traffic at Orsett Cock junction is expected to increase significantly by 15% in the AM peak and 24% in the PM peak
- Micro-simulation traffic modelling is now being undertaken by National Highways to fully assess LTC impacts and develop proposals to improve the junction
- Future operation and improvements need to consider future local growth aspirations and measures to promote walking, cycling and bus use
- Orsett Cock is likely to face a number of temporary closures and significant disruption during LTC construction
- Expected that Orsett village will be severely impacted by traffic rerouting during these periods of disruption



The Manorway / A13 Junction



Manorway

- Critical for local communities and for access to London Gateway
- Currently operates within capacity following junction improvement works by London Gateway / DP World
- Traffic levels are forecast to increase with LTC
- Risk that the Manorway junction will be used as an alternative route, to avoid Orsett Cock junction, to reach the Port of Tilbury (via A1089) by u-turning at Manorway
- Junction improvements have not been yet been considered by National Highways although microsimulation traffic modelling is due to take place

Corringham

- A further predicted effect of LTC is a substantive increase in traffic flow on B1420 and Southend Road
- Re-routing is due to delay at the Five Bells junction of the A13/A176 and passes through residential areas not appropriate for an increase in traffic



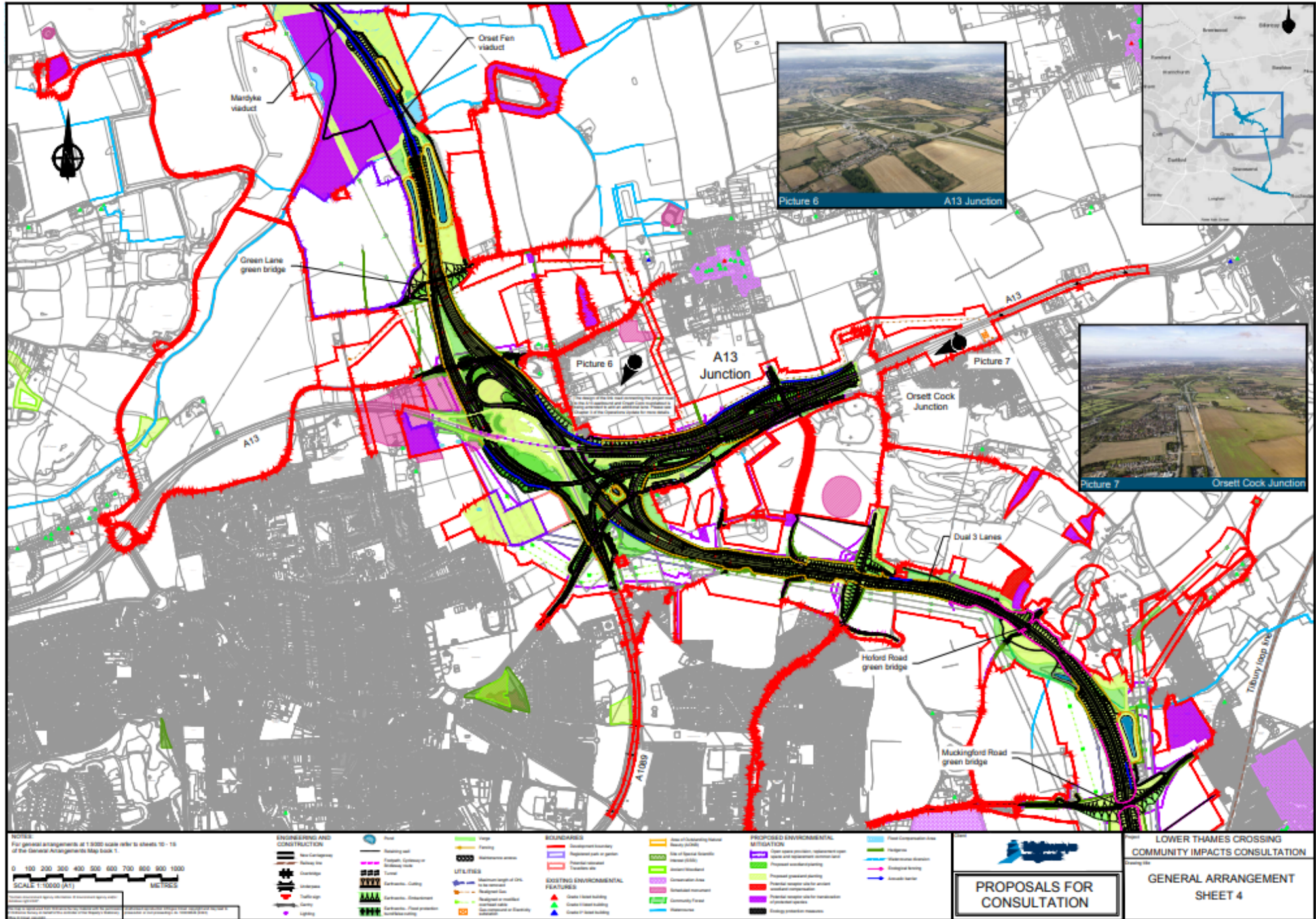
Summary

- LTC scheme utilises local roads and junctions (A13 and Orsett Cock junction) as part of their scheme
- LTC impacts on critical local junctions including at A13/Orsett Cock, A13 / The Manorway
- LTC uses local road capacity and will impact on our ability to deliver local economic growth aspirations e.g. Thames Freeport, Emerging Thurrock Local Plan
- Orsett Cock (and many junctions across Thurrock) are likely to face a number of temporary closures and significant disruption during construction of LTC
- Local communities will be severely impacted by traffic rerouting during these periods of disruption
- National Highway must:
 - Fully assess the impact of LTC on key local junctions and develop and commit to junction improvements where necessary
 - Commit to local traffic calming and environmental mitigation measures in local villages e.g Orsett
 - Develop and deliver an exemplar customer engagement strategy during the construction period



LTC / A13 Junction

Page 6



NOTES
 For general arrangements at 1:5000 scale refer to sheets 10-18 of the General Arrangements Map Book 1.

0 100 200 300 400 500 600 700 800 1000
 SCALE: 1:10000 (A1)
 METRES

ENGINEERING AND CONSTRUCTION

	New Carriageway
	Railway line
	Overpass
	Underpass
	Toll bridge
	Spanning Gully
	Lighting

UTILITIES

	Water supply
	Gas supply
	Electricity supply
	Telecommunications
	Other utilities

BOUNDARIES

	Government boundary
	Regional park or green
	Parish boundary
	Other boundary

EXISTING ENVIRONMENTAL FEATURES

	Grade I listed building
	Grade II listed building
	Grade II* listed building
	Other listed building

PROPOSED ENVIRONMENTAL MITIGATION

	Open space provision
	Green infrastructure
	Other mitigation

PROPOSED ENVIRONMENTAL MITIGATION

	Green infrastructure
	Other mitigation

PROPOSALS FOR CONSULTATION

LOWER THAMES CROSSING COMMUNITY IMPACTS CONSULTATION

GENERAL ARRANGEMENT SHEET 4